



# SCHOOL OF MUSIC

---



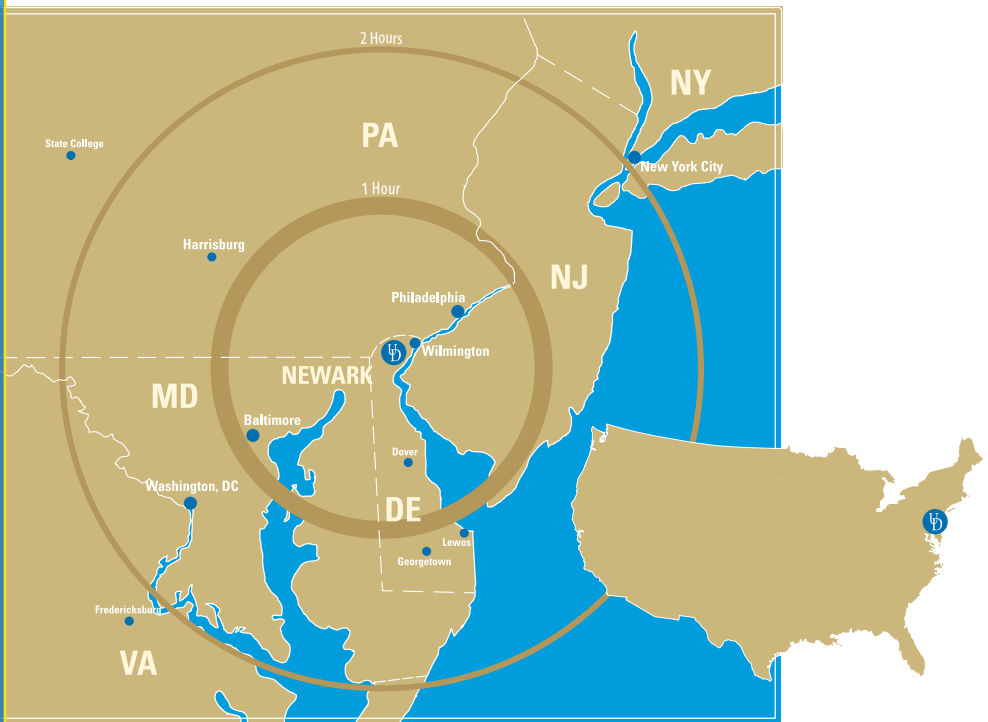






From its founding as a small private academy in 1743, the University of Delaware has grown to become a Land Grant, Sea Grant and Space Grant institution, offering an impressive collection of educational resources. The University's distinguished faculty includes internationally known scientists, authors and teachers, who are committed to continuing the University of Delaware's tradition in providing one of the highest quality undergraduate educations available. As a state-assisted, privately controlled institution, the University seeks to enroll students from diverse backgrounds and a wide variety of geographic regions.

The main campus of the University, situated in the historic town of Newark (pronounced New Ark, as it was once spelled), offers a traditional small-town college atmosphere while simultaneously providing easy access to New York, Philadelphia, Baltimore and Washington, D.C. With such geographic proximity to these major metropolitan areas, students are immersed in the country's preeminent performing arts region. They have access to internationally recognized guest artists and pedagogues, support and guidance for exploring their own projects, touring opportunities with our renowned ensembles and a variety of programs for performance and study both domestically and abroad.



**Located near the northern tip of Delaware in Newark, the University is convenient to East Coast cities, including:**

- Wilmington: 20 minutes
- Philadelphia: 50 minutes
- Baltimore: 1 hour
- Washington, D.C.: 2 hours
- New York City: 2½ hrs



# DEGREES & MAJORS

## Undergraduate Degree Programs

### ***Bachelor of Music (B.M.)***

- Applied Music (instrumental, piano, voice)
- Music Education (instrumental, choral/general)
- Composition
- Music Theory
- Music History and Literature
- Jazz and Improvisation

### ***Bachelor of Arts (B.A.)***

- Music (general)
- Music (plus music management concentration)
- 4+1 (M.B.A. in the 5th year)

### ***Undergraduate Degree Supplements***

- Honors Degree
- Degree with Distinction
- Minors
  - Applied Music
  - Composition (available to music majors only)
  - Jazz Studies
  - Music Management Studies
  - Musical Studies



## Graduate Degree Programs

### ***Master of Music (M.M.)***

- Performance
- Teaching
- Composition

Full degree/minor requirements can be found in the UD Catalog:  
[academiccatalog.udel.edu](http://academiccatalog.udel.edu)

# FACILITIES



## Amy E. du Pont Music Building

Home to music classrooms, teaching studios, rehearsal and practice rooms, the Music Resource Center, and the 440-seat Loudis Recital Hall.

## David and Louise Roselle Center for the Arts

Houses four performance venues and 30 individual practice rooms:

- Thompson Theatre, 450-seat proscenium theatre
- Gore Recital Hall, 200-seat recital space
- Studio Theatre, a black-box space that seats up to 200
- Puglisi Orchestra Hall, an open space that seats up to 300

## Bayard Sharp Hall

On the National Register of Historic Places, this renovated church is home to the custom-built Edward and Naomi Jefferson Organ, a majestic 22-rank Dobson pipe organ. It now functions as an intimate performance space, seating up to 100.

## Mitchell Hall

An exclusive performance hall on campus that seats 600.

## Additional Specialty Rooms

- Recording Studio (for composition and music management students)
- Reed Room (for students studying the construction, maintenance and performance of double reed instruments)
- Harp and harpsichord practice rooms and storage space





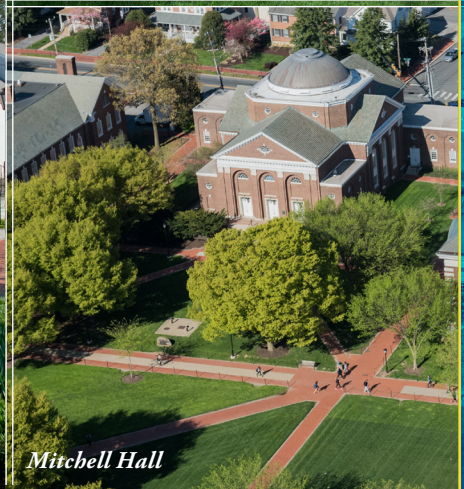
*Gore Recital Hall*



*Bayard Sharp Hall*



*Roselle Center for the Arts*



*Mitchell Hall*

# STUDENT ENSEMBLES

## Instrumental

Both large ensembles and chamber groups are available to all students, regardless of degree program. Auditions for select groups are held the day before classes begin each Fall and Spring semester.

### **Concert & Marching Bands**

- Collegiate Band
- Fightin' Blue Hen Marching Band
- Pep Band
- Symphonic Band
- Wind Ensemble

### **Jazz Ensembles**

- Jazz Bands I & II
- Jazz Chamber Ensembles
- UD Slides: Jazz Trombone Ensemble

### **Orchestras**

- Chamber Orchestra
- Symphony Orchestra
- University Strings

### **Chamber Ensembles**

- Basses Loaded: UD Tuba/Euphonium Ensemble
- Chamber Music Program: Strings, Piano, Winds
- Chamber Woodwinds
- Clarinet Quartets & Choir
- Collegium Musicum and Baroque Chamber
- Delaware Steel
- Horn Ensemble
- Percussion
- Still Breathing: Composition Studio
- Trombone Choir



*Collegium Musicum*





*Wind Ensemble*



*Fightin' Blue Hen Marching Band*



*Delaware Steel*



*Percussion Ensemble*



*Symphony Orchestra*



*Jazz Band*



## Vocal

### Choir

- Concert Choir
- Consort of Voyces
- Jazz Singers
- Schola Cantorum
- University of Delaware Chorale
- University Singers

### Opera

- Opera: NOW
- Opera Workshop
- University of Delaware Opera Theatre

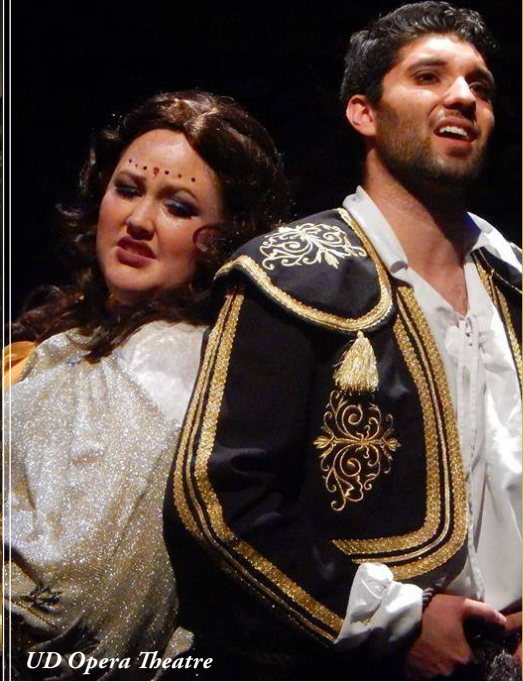


*Opera Workshop*



*University of Delaware Chorale*





*UD Opera Theatre*



# BEYOND THE CLASSROOM

## International Travel

As the first university in the United States to offer study abroad opportunities, UD remains a forerunner for international education. Winter Session Study Abroad (5-week concentrated semester) led by UD School of Music faculty regularly takes students to Trinidad (studying steel drum construction, culture and repertoire, as well as Caribbean history) and London (the European symphonic tradition) in the month of January.

Additionally, music majors are encouraged to participate in non-Music Winter Study Abroad; the University of Delaware offers over 100 unique four- and five-week programs on six continents during



*Study Abroad*



Winter and Summer sessions as well as semester-long programs. Study Abroad scholarships are available through the Institute of Global Studies.

Our award-winning ensembles travel the world, providing students with unique performing and teaching opportunities. In recent years, the School of Music has sent students to England, Greece, Estonia, Hungary, Spain, Colombia, Israel, Taiwan, Austria and Germany to compete internationally, present at conferences, and be featured at international symposiums for performance, scholarship and research.

## Community Engagement

ProjectMUSIC (Music Uniting Students, Inspiring Communities) brings together UD music majors and area schools in a partnership dedicated to fostering musical exploration and education both in and outside the classroom.

The School of Music has a thriving Community Music School (CMS) accessible to students of all ages and skill levels. Current University of Delaware music majors are welcome to partner as Junior Faculty for CMS. Certification for teaching “Music for Young Minds” (early childhood music) classes, as well as classes through the Suzuki Institute, is also available.

## Student and Professional Networking

The UD School of Music sponsors chapters of major industry associations and professional music fraternities including Phi Mu Alpha Sinfonia (Xi Mu chapter), Sigma Alpha Iota (Eto Rho chapter), the National Association for Music Education (NAfME), American Choral Directors Association (ACDA), the Society of Composers, Inc. (SCI), American String Teachers Association (ASTA), the Jazz Educators and Performers Association (JEPA) and Music & Entertainment Industry Student Association (MEISA).



*Early Childhood Music Education*

# NON-MAJOR OPPORTUNITIES

## Non-Music Major Opportunities

The UD School of Music provides a wide range of musical experiences to enrich the education of all University of Delaware students, regardless of degree program. A variety of music courses and ensembles are open to all.

## Private Study

Non-music majors and minors have the option to audition for either Merit or Honors Private Study through the School of Music. Private Study includes weekly one-on-one lessons with an instructor of that instrument and participation in at least one approved ensemble.







# ADMISSIONS



## Undergraduate Admissions

All prospective undergraduate music students must complete the following:

1. Application for the University of Delaware Undergraduate Admissions. A comprehensive checklist of undergraduate applicant materials can be found at **[www.udel.edu/admissions](http://www.udel.edu/admissions)**.
2. Audition on a primary instrument. Audition Request Forms and instrument-specific audition repertoire are online at **[www.music.udel.edu/auditions](http://www.music.udel.edu/auditions)**.

## **Scholarships**

All prospective music majors are automatically considered for music scholarship awards during the audition process. Scholarship awards are competitive, merit-based, and are assigned by faculty and committee recommendation after all auditions have been heard (mid-February).

## **Undergraduate Application Timeline**

- |                |  |
|----------------|--|
| <b>Jan. 1</b>  | Composition Prescreening deadline (if applicable)  |
| <b>Jan. 15</b> | Deadline for Common Application, Audition Request Form (online), and Voice Prescreening (vocalists only) |
| <b>May 1</b>   | Deposit deadline   |





## Graduate Admissions

Graduate students must apply to the University of Delaware's Graduate College. Please visit [www.grad.udel.edu](http://www.grad.udel.edu) for details. Those applying to the Master of Music in Performance must audition on a primary instrument. Applicants to the Master of Music in Teaching or Composition must complete an interview with faculty in their respective areas and those applying for the Master in Composition must take the Graduate Music Theory Entrance Exam.

Specific audition repertoire is required for each instrument and may vary from one degree program to the next. For details, please visit [www.music.udel.edu/auditions](http://www.music.udel.edu/auditions).

### ***Assistantship and Scholarship Opportunities***

Graduate applicants who complete their application materials prior to February 1st are also considered for a variety of Teaching and Graduate Assistantships as well as tuition scholarships.

### ***Graduate Application Timeline***

- Jan. 15** Application deadline for audition-based programs and all funding consideration
- Apr. 15** Deadline to accept funding offer
- May 15** Final application deadline for fall admission













# MUSIC

## BY THE NUMBERS

**19,060**

Undergraduate  
students  
at UD

**4,164**

Graduate  
students  
at UD

**300+**

Music  
performances  
annually

**209**

Undergraduate  
music majors

**44**

Graduate  
music students

**4:1**

Student-to-  
Faculty

**16**

Average class size

**8**

Average studio size

**99%** Post-graduation music  
education job placement

### ANNUAL TUITION

**\$13,680** (in-state)

**\$34,210** (out-of-state)

**NASM  
ACCREDITED**



# SCHOOL OF MUSIC

---

 @UDSchoolOfMusic  /MusicAtUD  [music.udel.edu](https://music.udel.edu)